



Rogue—South Coast Multi-Species Conservation and Management Plan (RSP)

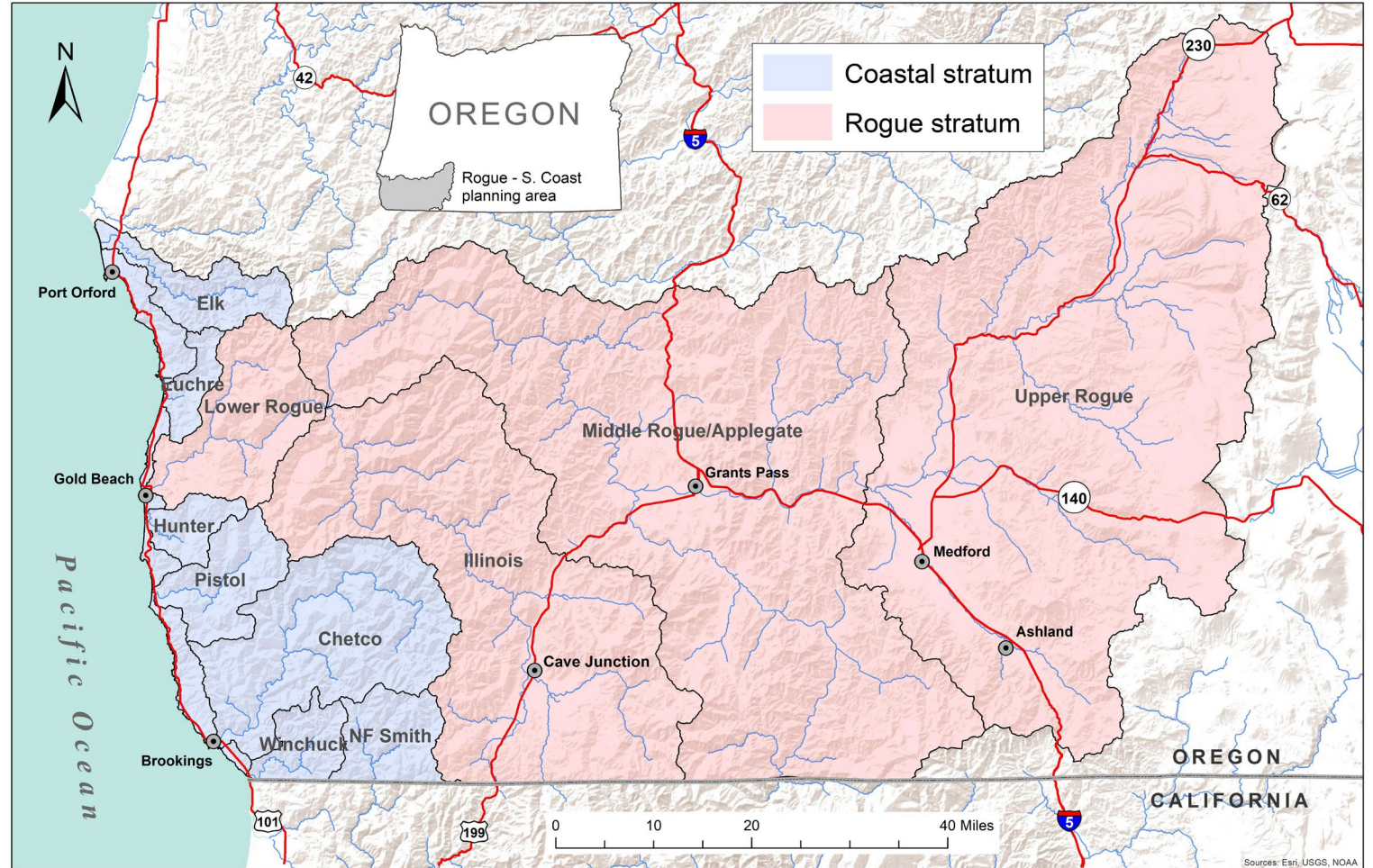
Exhibit B

Oregon Fish and Wildlife Commission
December 17, 2021

RSP Species and Populations

4 Species Management Units

- Winter Steelhead
- Summer Steelhead
- Coho Salmon
- Coastal Cutthroat Trout



RSP Key Features



- Identifies strategies and actions to address limiting factors and achieve desired status.
- Prioritizes habitat actions that address primary limiting factors.
- Describes risk from climate and ocean change and actions needed to build resilience.
- Fosters and sustains fishing opportunity while building in additional conservation safeguards.
- Establishes specific management triggers and actions based on enhanced monitoring.

Public Involvement



- Rogue–South Coast Angler Survey
- RSP website
- Stakeholder Process
- Habitat Work Group
- Coordination with:
 - Confederated Tribes of Grand Ronde
 - Confederated Tribes of Siletz Indians
 - Coquille Indian Tribe
 - Cow Creek Band of Umpqua Tribe of Indians
 - NOAA-Fisheries
- Independent science review
- Public written comment period
- 3 public open house meetings.
- Commission briefing on Oct 15, 2021
- Special Commission meeting on Oct 25, 2021
- Commission meeting on Dec 16-17, 2021

Final Draft RSP

Changes since October

1. Added **Appendix VII – Management Triggers and Actions**
2. Clarifying edits on several topics
3. Housekeeping

Management Action Alternatives

1. Wild Fish Emphasis Areas and Mixed Emphasis Areas
2. Rogue Coho salmon hatchery release
3. Winter steelhead interim bag limits and conservation status thresholds

Decision 1: Wild Fish Emphasis Areas and Mixed Emphasis Areas

Alternative 1 – Staff Proposal

Designations apply to all species, including spring and fall Chinook salmon

Alternative 2

Designations only apply to species covered by the RSP

Decision 2: Rogue Coho salmon hatchery release

Alternative 1 – Staff Proposal

Increase Rogue hatchery Coho salmon release by 25,000 smolts

- Increases Coho salmon release target from 75,000 to 100,000 smolts.
- Restored hatchery production (25,000 smolts) would be released near Gold Hill.

Alternative 2

Do not increase Rogue hatchery Coho salmon release

- Maintains current Coho salmon release target of 75,000 smolts.

Decision 3.1: Interim wild winter steelhead bag limits

Alternative 1 – Staff Proposal

Maintain current 1/3 bag limit

- ODFW would conduct a review at the end of the 5-year interim period to determine the appropriateness of bag limits relative to the new harvest rate control.

Alternative 2

Change regulations to Catch and Release

- Actions related to wild winter steelhead harvest monitoring would be delayed until after the 5-year interim period.
- After 5-year interim period, ODFW will implement a 1/3 bag limit and manage adaptively to ensure consistency with the harvest rate control.

Decision 3.2: Winter steelhead conservation status thresholds

Option A – Staff Proposal

Juvenile Steelhead Abundance Index: **30,000**

Juvenile Steelhead Site Occupancy: **75%**

Rogue Wild Half-Pounder Index: **200**

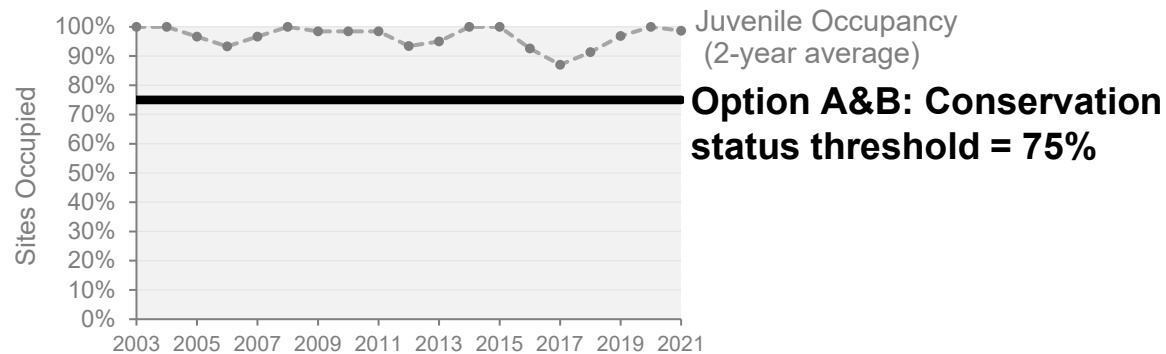
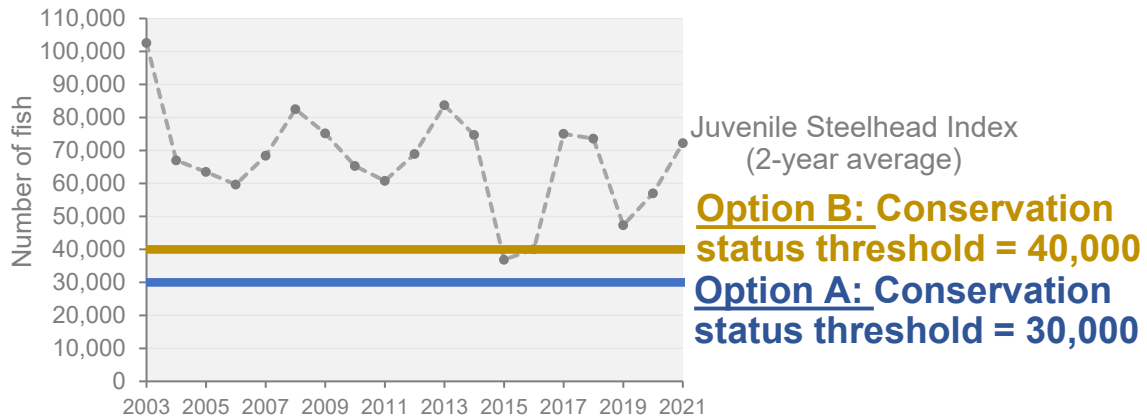
Option B

Juvenile Steelhead Abundance Index: **40,000**

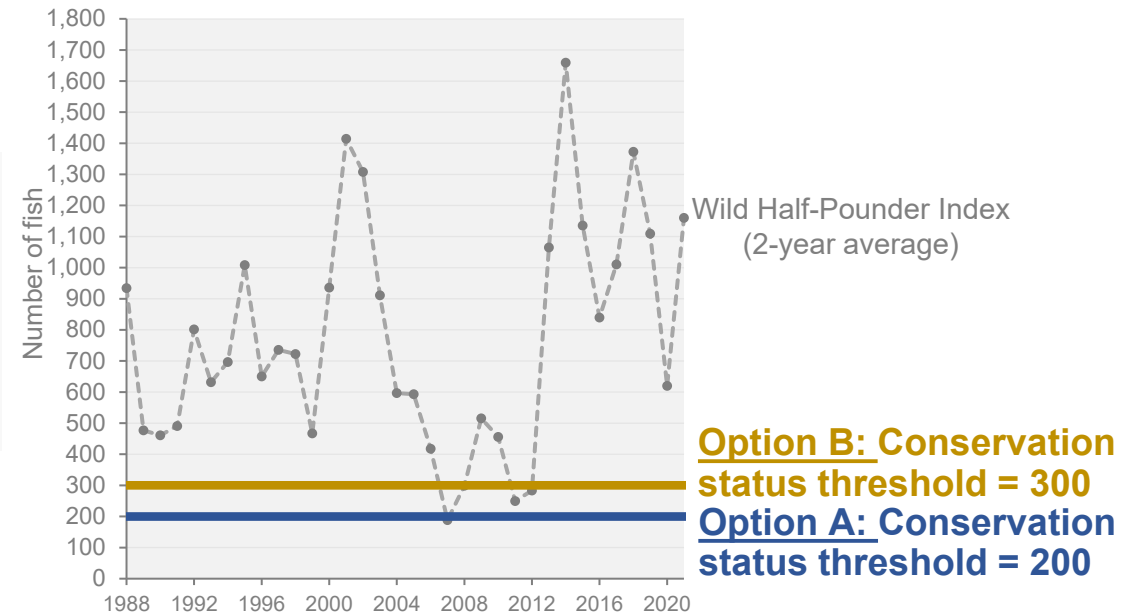
Juvenile Steelhead Site Occupancy: **75%**

Rogue Wild Half-Pounder Index: **300**

Coastal Stratum



Rogue Stratum



Administrative Rule Implementing the RSP

- Same approach as other plans developed under the Native Fish Conservation Policy (NFCP)
- Codifies elements required by the NFCP, including:
 - Desired Status
 - Management Strategies
 - Adaptive Management Process



- **Decision 1: Wild Fish Emphasis Areas and Mixed Emphasis Areas**
affects one management strategy in the draft rule [OAR 635-500-6785(6)(c)(C)]

Alternatives for draft OAR 635-500-6785 (6) (c) (C)

Alternative 1

Manage for wild fish emphasis or mixed emphasis in the appropriate Management Areas as outlined in RSP Figure 14 and obtain Commission approval for starting new or eliminating existing hatchery programs in a Management Area relative to those in RSP Table 14 (excluding educational and research programs and conservation actions).

Alternative 2

Manage for wild fish emphasis or mixed emphasis for plan species in the appropriate Management Areas as outlined in RSP Figure 14 and obtain Commission approval for starting new or eliminating existing hatchery programs in a Management Area relative to those in RSP Table 14 (excluding educational and research programs and conservation actions).

Staff Recommended Motion

I move to approve the final draft of the *Rogue–South Coast Multi-Species Conservation and Management Plan* as contained in Attachment 3 and adopt the Oregon Administrative Rule for the *Rogue–South Coast Multi-Species Conservation and Management Plan* as proposed by staff in Attachment 5.

Questions?